



Technical specification

Submersible pump C 3170, 60 Hz



Flygt





C 3170

Product

Submersible pump for pumping clean water, surface water and waste water containing solids or long-fibred material.

Denomination

Product code	3170.180
Installation	P, S, T, Z
Impeller characteristics	LT, MT, HT

Process data

Liquid temperature	max +40 °C
Depth of immersion	max 20 m
The pH of the pumped liquid	pH 5,5-14
Liquid density	max. 1100 kg/m ³
Impeller throatlet	See Motor rating table

Motor data

Frequency	60 Hz
Insulation class	H (+180 °C)
Voltage variation	
- continuously running	max ± 5%
- intermittent running	max ± 10%
Voltage imbalance between phases	max 2%
No. of starts/hour	max 30

Cable

Direct-on-line start

SUBCAB®	4G4+2x1,5 mm ²
	4G6+2x1,5 mm ²
	4G10+2x1,5 mm ²
	4G16+2x1,5 mm ²

SUBCAB®	4G25 mm ²
	4G25+2x1,5 mm ²

Y/D start

SUBCAB®	7G2,5+2x1,5 mm ²
	7G4+2x1,5 mm ²
	7G6+2x1,5 mm ²

VFD Application

NSSHÖU../3E+St	3x2,5+3x2,5/3E+3x1,5 St
	3x6+3x6/3E+3x1,5 St

Monitoring equipment

Thermal contacts opening temperature	125 °C
--------------------------------------	--------

Material

Impeller	Cast iron
Pump housing	Cast iron
Stator housing	Cast iron
Shaft	Stainless steel or carbon steel
O-rings	Nitrile rubber

Mechanical face seals

Alternative	Inner seal	Outer seal
1	Corrosion resistant cemented carbide/Carbon	Corrosion resistant cemented carbide/Corrosion resistant cemented carbide
2	Corrosion resistant cemented carbide/Corrosion resistant cemented carbide	Corrosion resistant cemented carbide/Corrosion resistant cemented carbide

Surface Treatment

All cast parts are primed with a water-borne primer. The finishing coat is a high-solid two pack paint.

Weight

See dimensional drawing.

Option

3170.090	Ex. proof design
Warm liquid version on request	
Leakage sensor in stator housing	FLS
Leakage sensor in oil housing	CLS
Surface treatment	Epoxy treatment
Other cables	
Zinc anodes	

Accessories

Discharge connections, adapters, hose connections and other mechanical accessories.

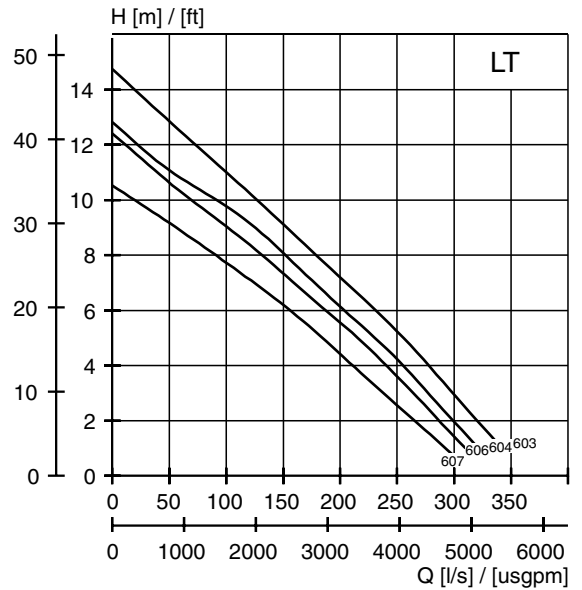
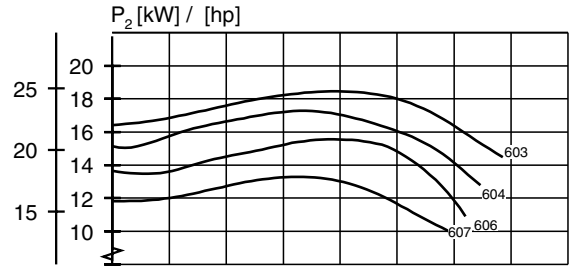
Electrical accessories such as pump controller, control panels, starters, monitoring relays, cables.

See separate booklet or www.flygt.com, for further information.

LT-Motor rating and performance curve

Curve/Impeller No	Rated power, kW	Rated current, A	Starting current, A	Power factor cos φ	Impeller thoughtlet, mm	Ex proof version available	Installation				
							P	S	T	Z	
460 V, 60 Hz, 3 ~, 1170 r/min											
603	18,6	36,0	262	0,74	102	Yes	•	•	•	•	
604	18,6	36,0	262	0,74	102	Yes	•	•	•	•	
606	18,6	36,0	262	0,74	102	Yes	•	•	•	•	
607	18,6	36,0	262	0,74	102	Yes	•	•	•	•	

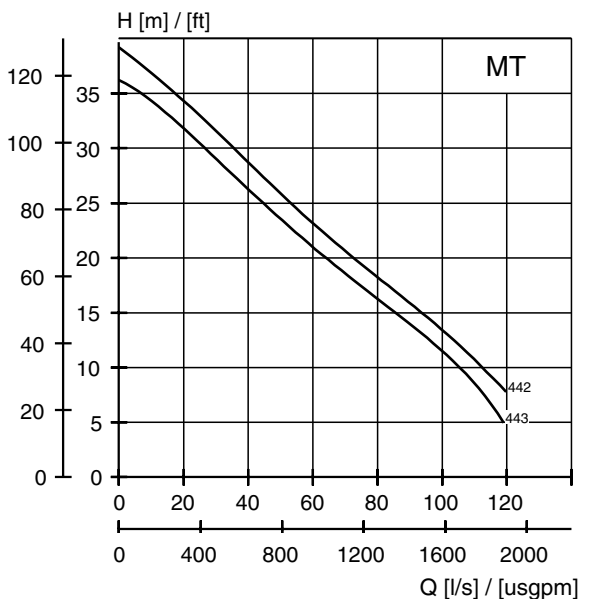
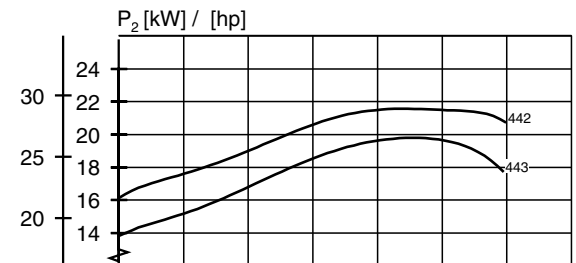
Y/D starting current is approximately 1/3 of D starting current.



MT-Motor rating and performance curve

Curve/Impeller No	Rated power, kW	Rated current, A	Starting current, A	Power factor cos φ	Impeller thoughtlet, mm	Ex proof version available	Installation				
							P	S	T	Z	
460 V, 60 Hz, 3 ~, 1750 r/min											
442	22,0	36,0	221	0,90	100	Yes	•	•	•	•	
443	22,0	36,0	221	0,90	100	Yes	•	•	•	•	

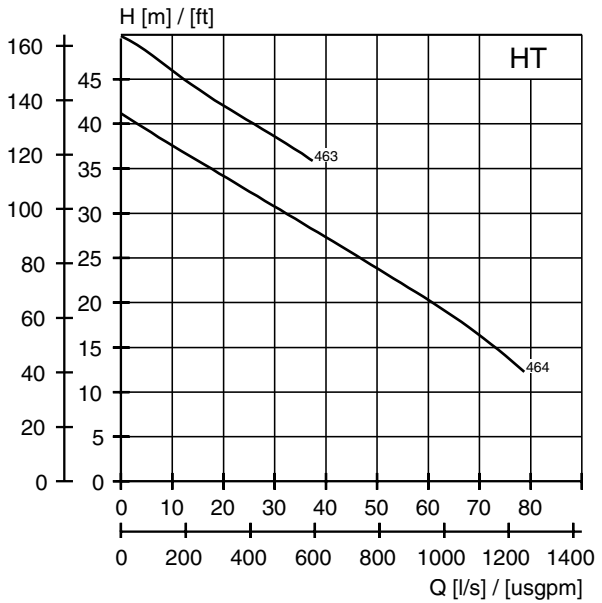
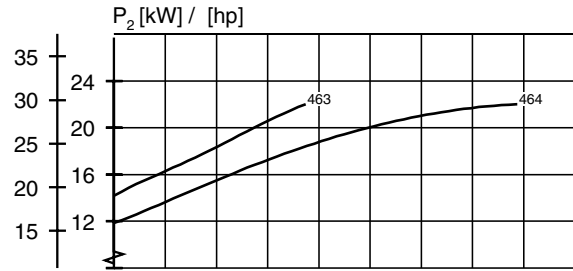
Y/D starting current is approximately 1/3 of D starting current.



HT-Motor rating and performance curve

Curve/Impeller No	Rated power, kW	Rated current, A	Starting current, A	Power factor cos φ	Impeller throatlet, mm	Ex proof version available	Installation				
							P	S	T	Z	
460 V, 60 Hz, 3 ~, 1750 r/min											
463	22,0	36,0	221	0,90	76	Yes	•	•	•	•	
464	22,0	36,0	221	0,90	76	Yes	•	•	•	•	

Y/D starting current is approximately 1/3 of D starting current.



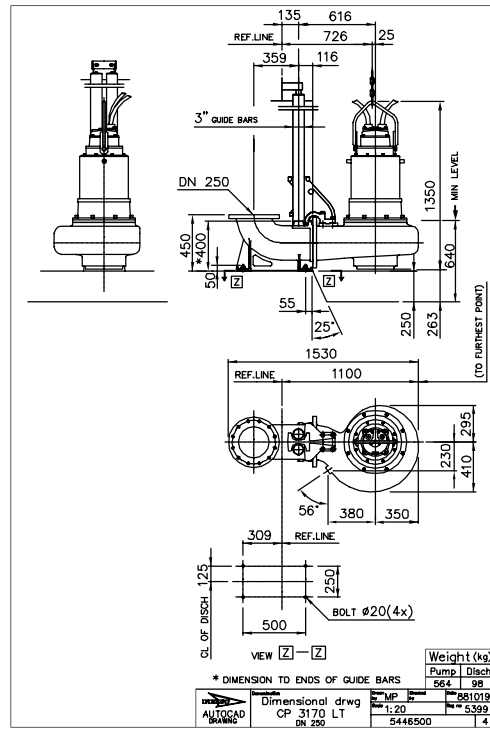
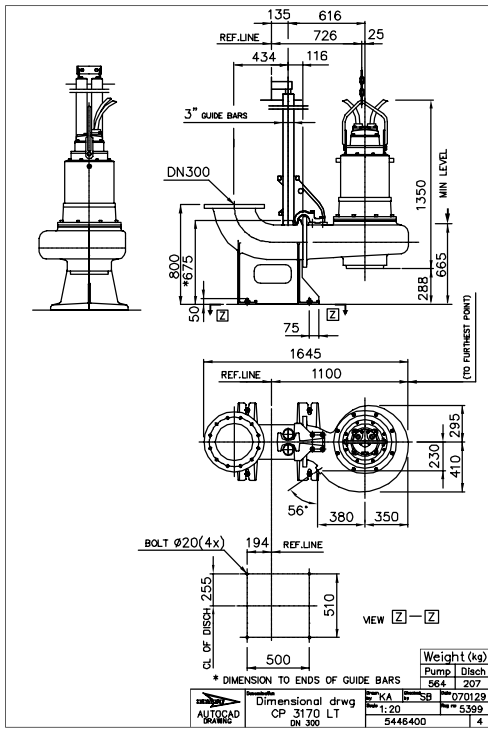
Dimensional drawing

All drawings are available as Acrobat documents (.pdf) and AutoCad drawings (.dwg). Download the drawings from www.flygt.com or contact your ITT Flygt representative for more information.

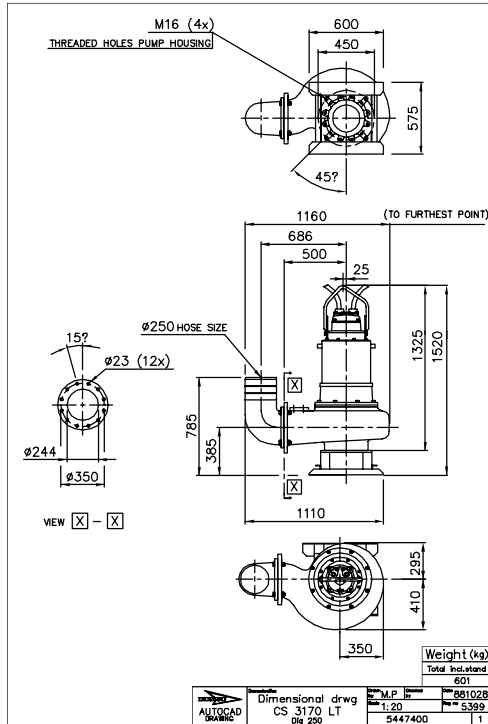
All dimensions are in mm.

LT, P-installation

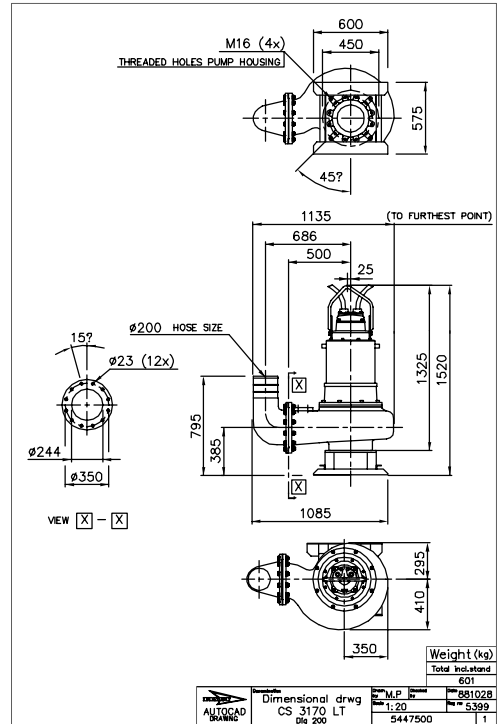
LT, P-installation



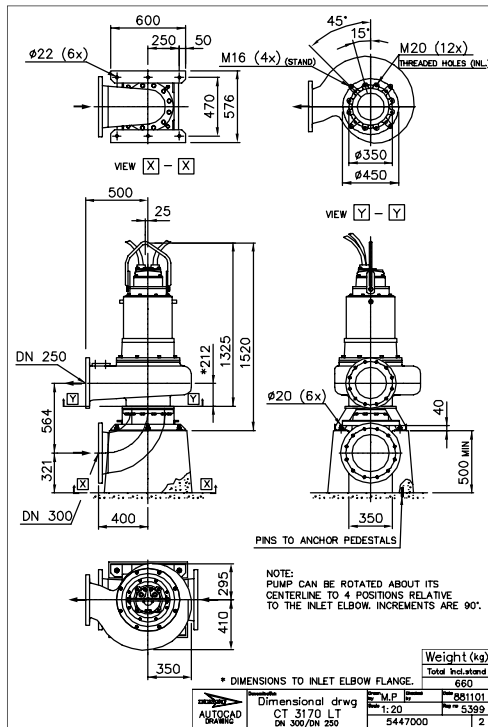
LT, S-installation



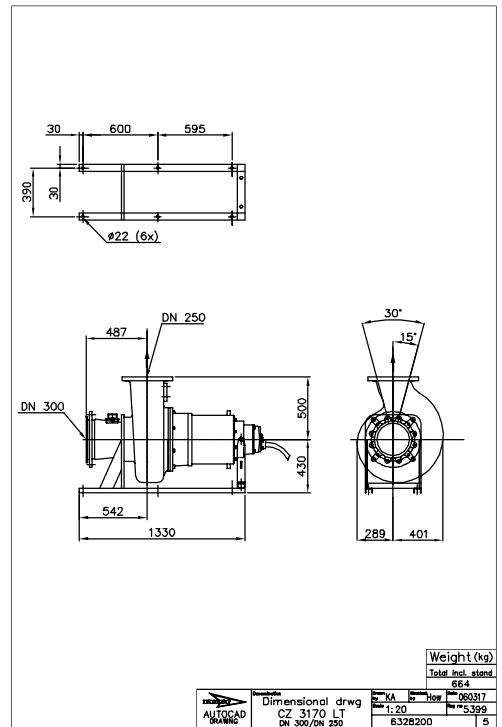
LT, S-installation



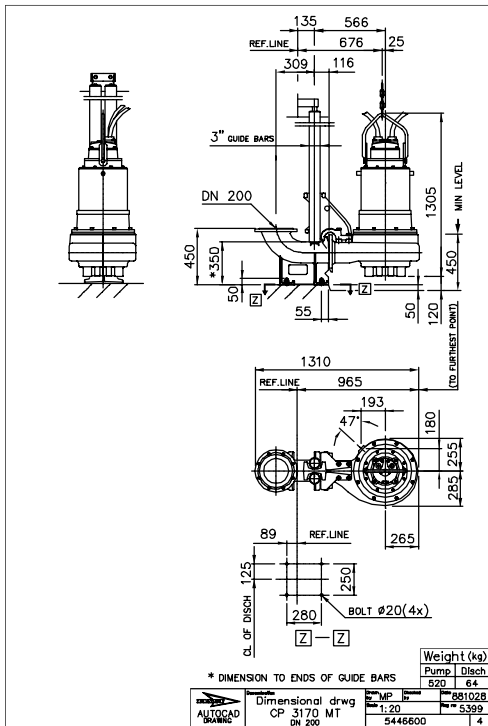
LT, T-installation



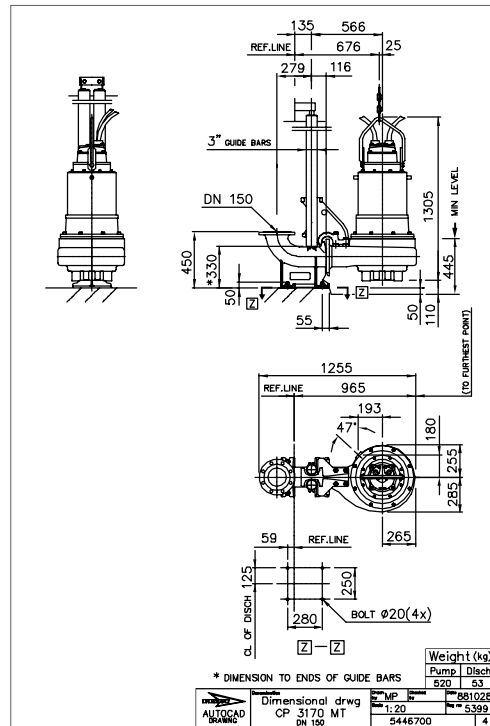
LT, Z-installation



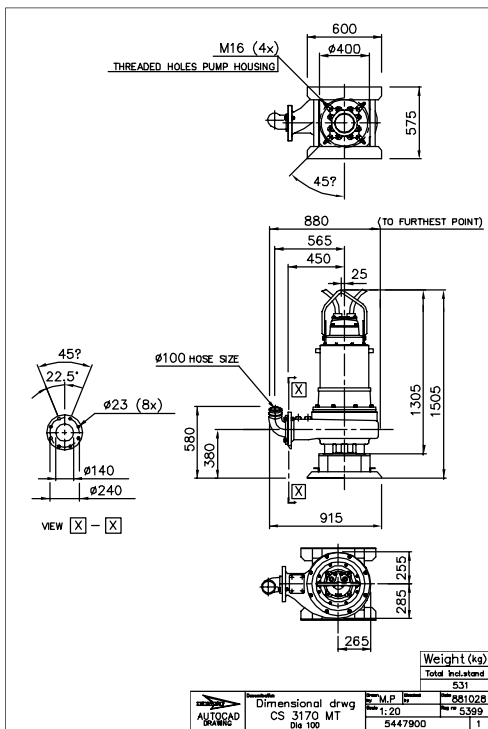
MT, P-installation



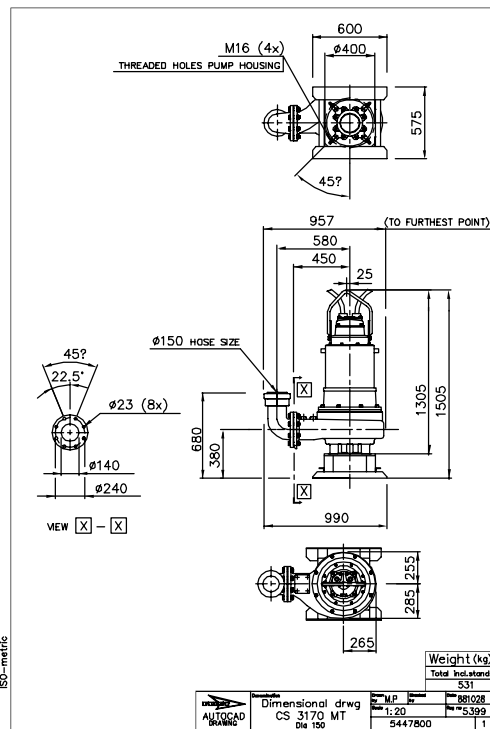
MT, P-installation



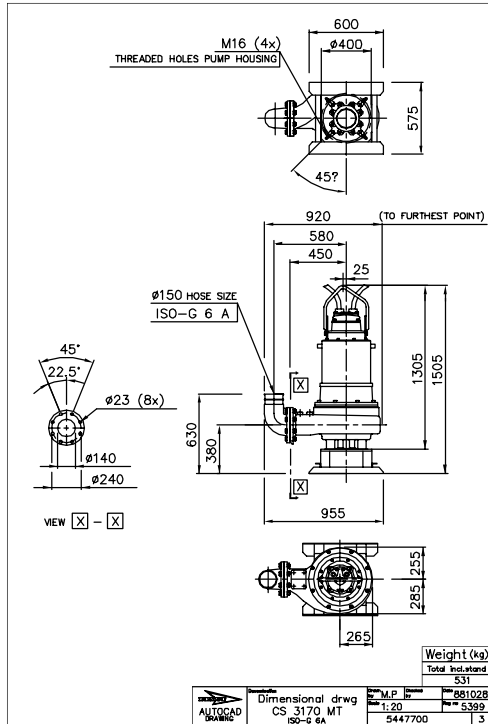
MT, S-installation



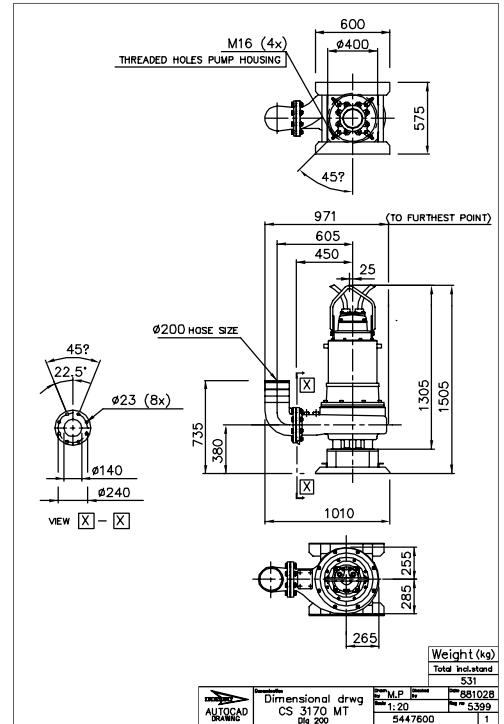
MT, S-installation



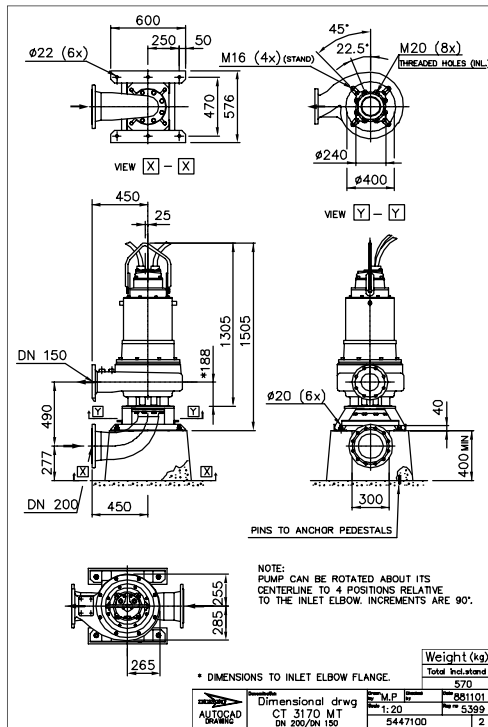
MT, S-installation



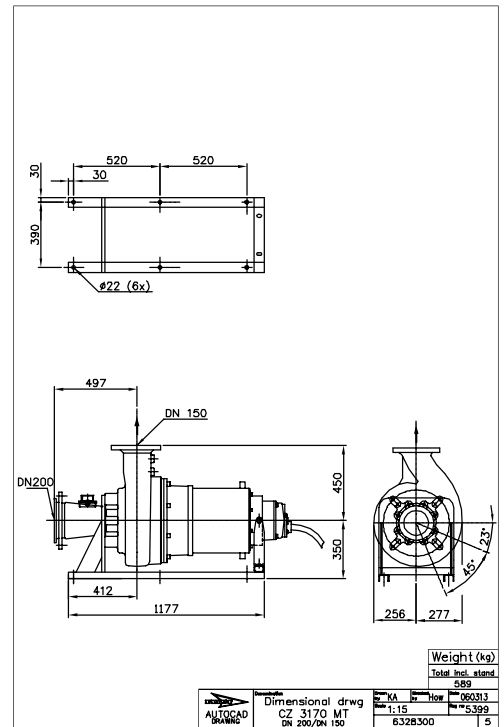
MT, S-installation



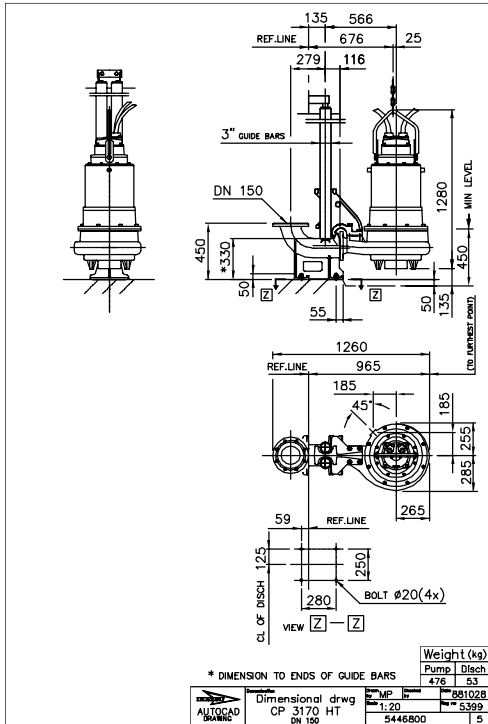
MT, T-installation



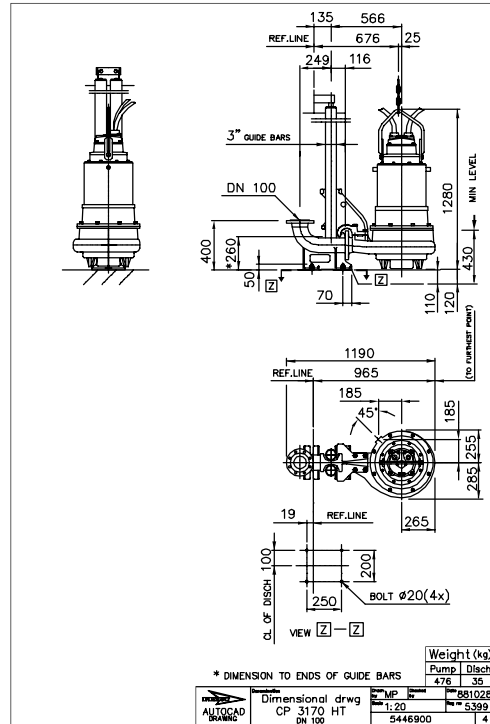
MT, Z-installation



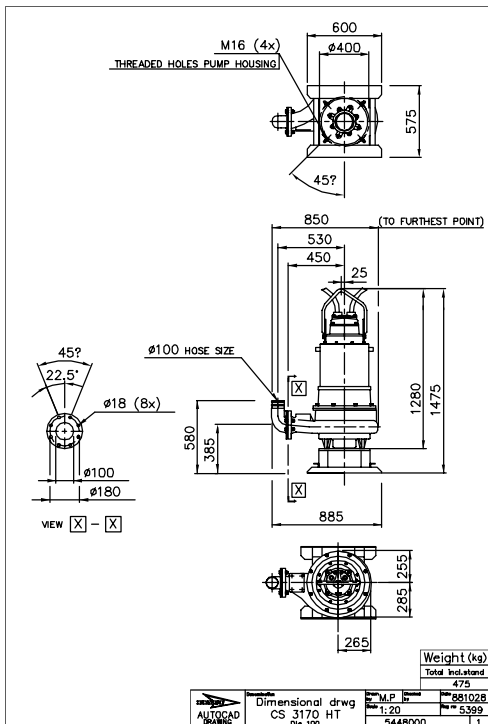
HT, P-installation



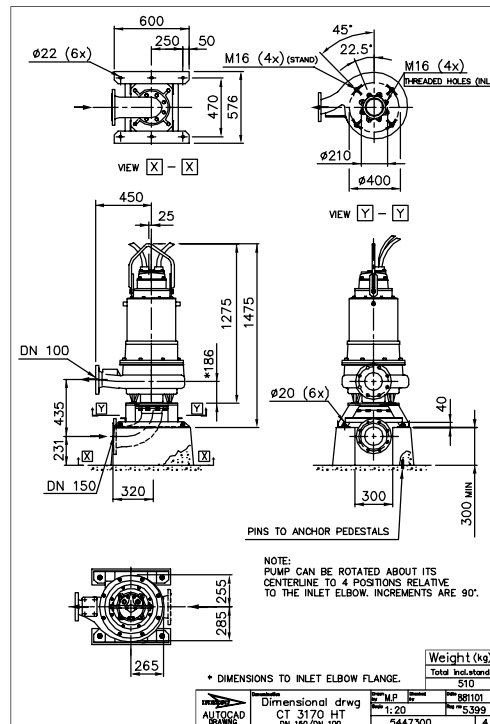
HT, P-installation



HT, S-installation

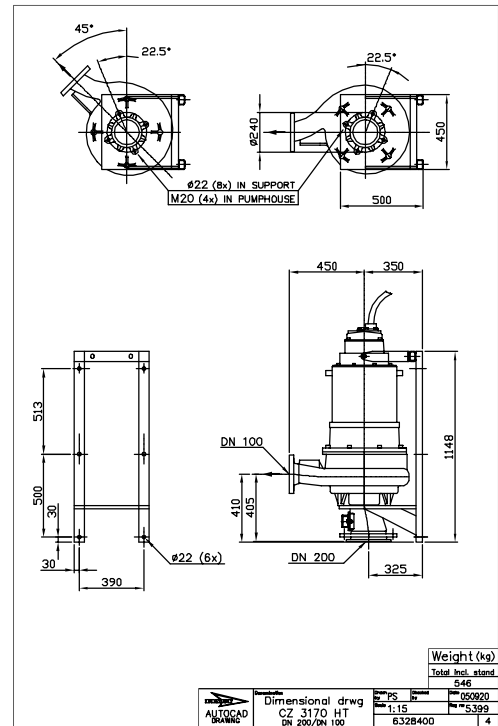
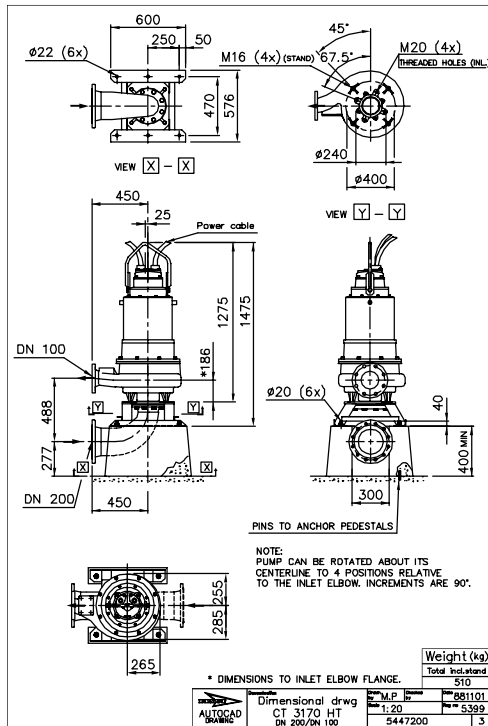


HT, T-installation



HT, T-installation

HT, Z-installation





www.flygt.com