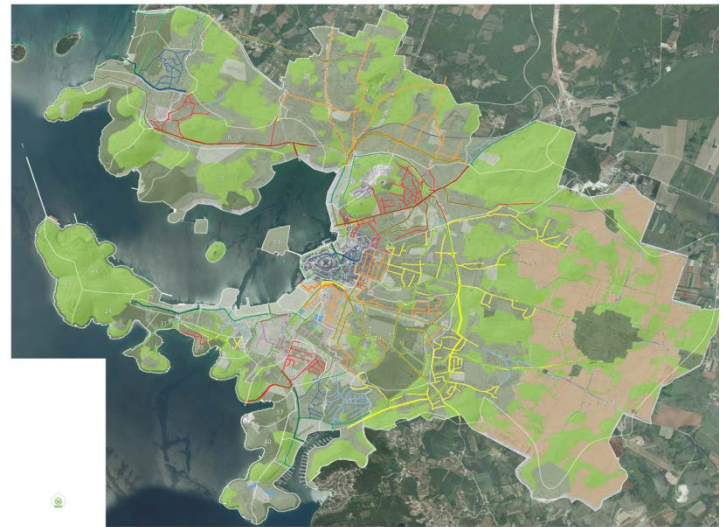


Integral approach to the design of storm water drainage in the town of Pula



Authors: Tatjana Uzelac, Katja Sošić, Josip Rubinić, Damir Prhat

Town of Pula

- Compared to similar towns in the region it has the lowest average amount of annual precipitations
- But the most problems with stormwater drainage



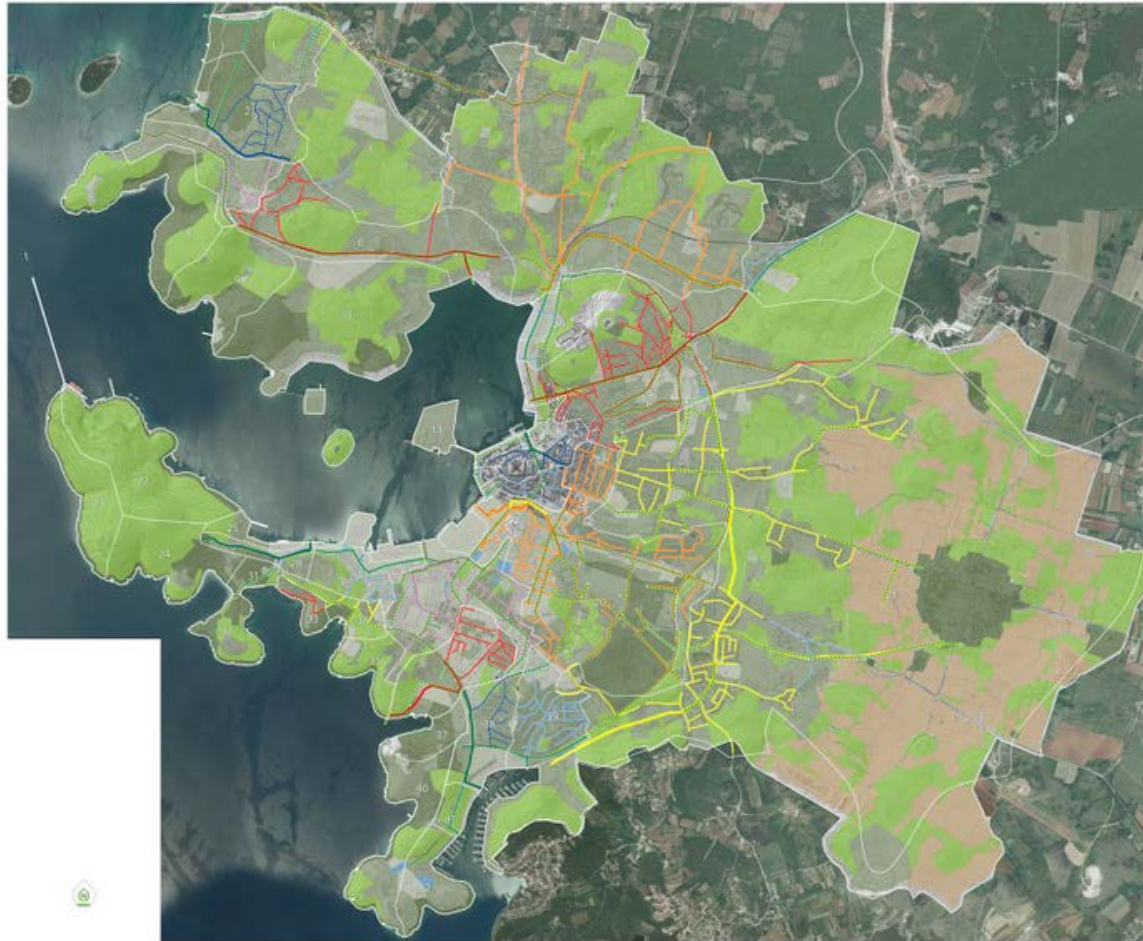
Integrated approach to the design of storm water drainage was needed to protect town from flooding.

Earlier solutions with combined sewers did not give the results.

We apply **WSUD** (Water Sensitive Urban Design) techniques to solve the problems with flooding and future water management with all stakeholders:

- Civil Engineers,
- Urban Planners,
- Landscape Architects,
- Local Administration,
- Citizens and
- Others

Integrated storm water plan for Town of Pula



THANK YOU FOR YOUR ATTENTION!