



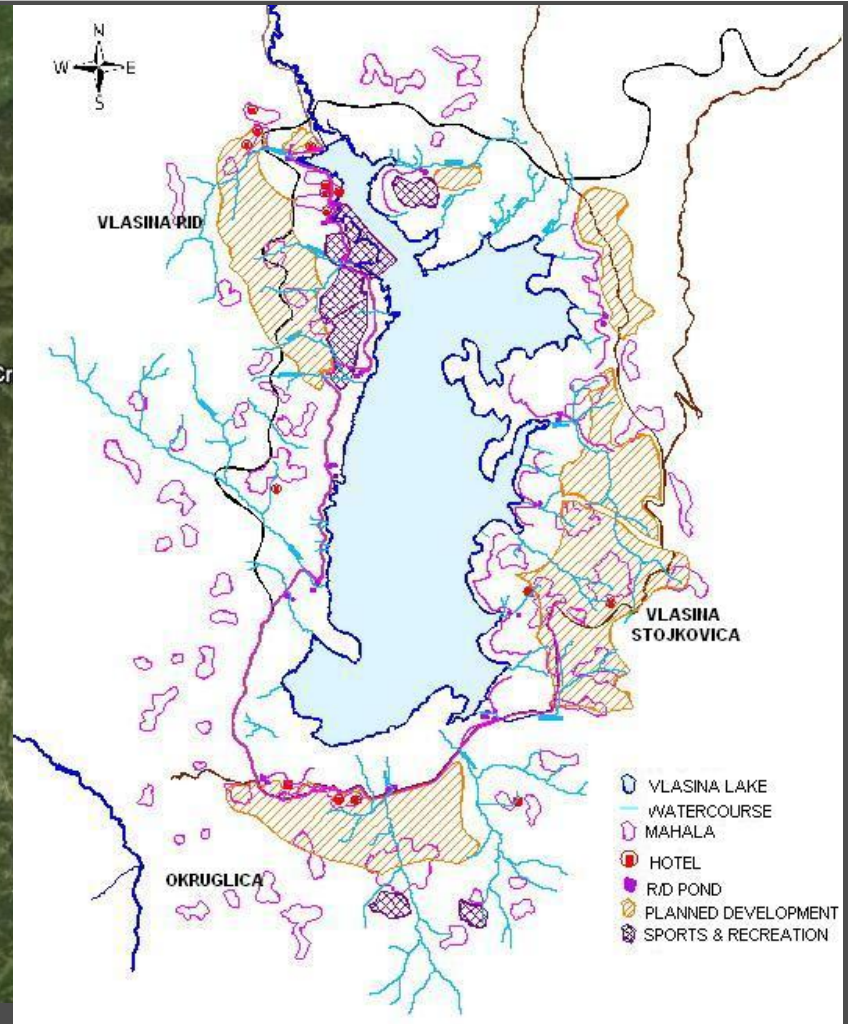
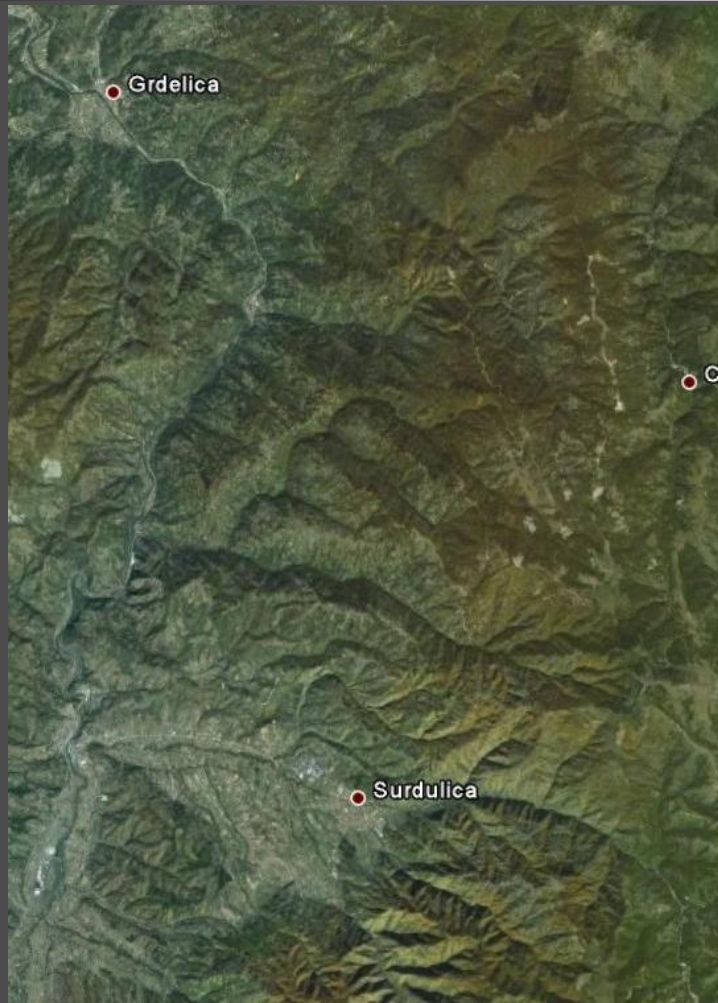
# 'UTILIZING STORMWATER CONTROL FACILITIES: FROM LOW-IMPACT DEVELOPMENT APPROACH TO BLUE-GREEN CORRIDORS'

Borislava Blagojević, Dragan Milićević, Olivera Potić

Faculty of Civil Engineering and Architecture  
University of Niš



# Study area



# Timeline

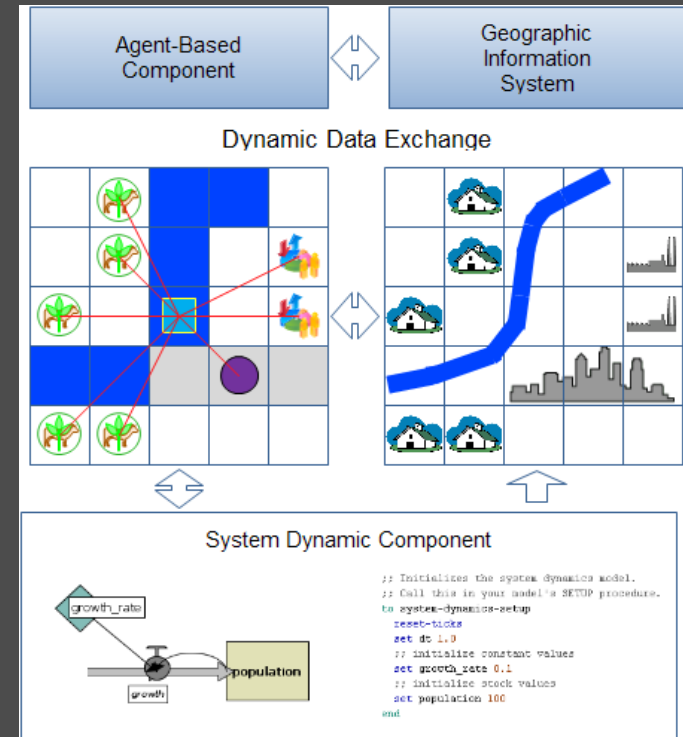
- ❑ **2004.** Master Plan for Area of Distinct Land Use Vlasina-Energoprojekt, Belgrade
- ❑ **2007-2009.** Preliminary and detailed technical design: System for Collection, Drainage, and Treatment of Waste Water in the Area of Distinct Land Use Vlasina; vol. B: Storm Water- Institute for CEA, Niš
- ❑ **2009.** Public discussion-panel, Surdulica
- ❑ **2009.** #1 project MISP program –EU funded project (SLAP 2.0 project scoring)
- ❑ **2008-2010.** Conference papers published
- ❑ **2011.** Agent based modelling idea
- ❑ **2012.** Initial Agent based model for water re-use



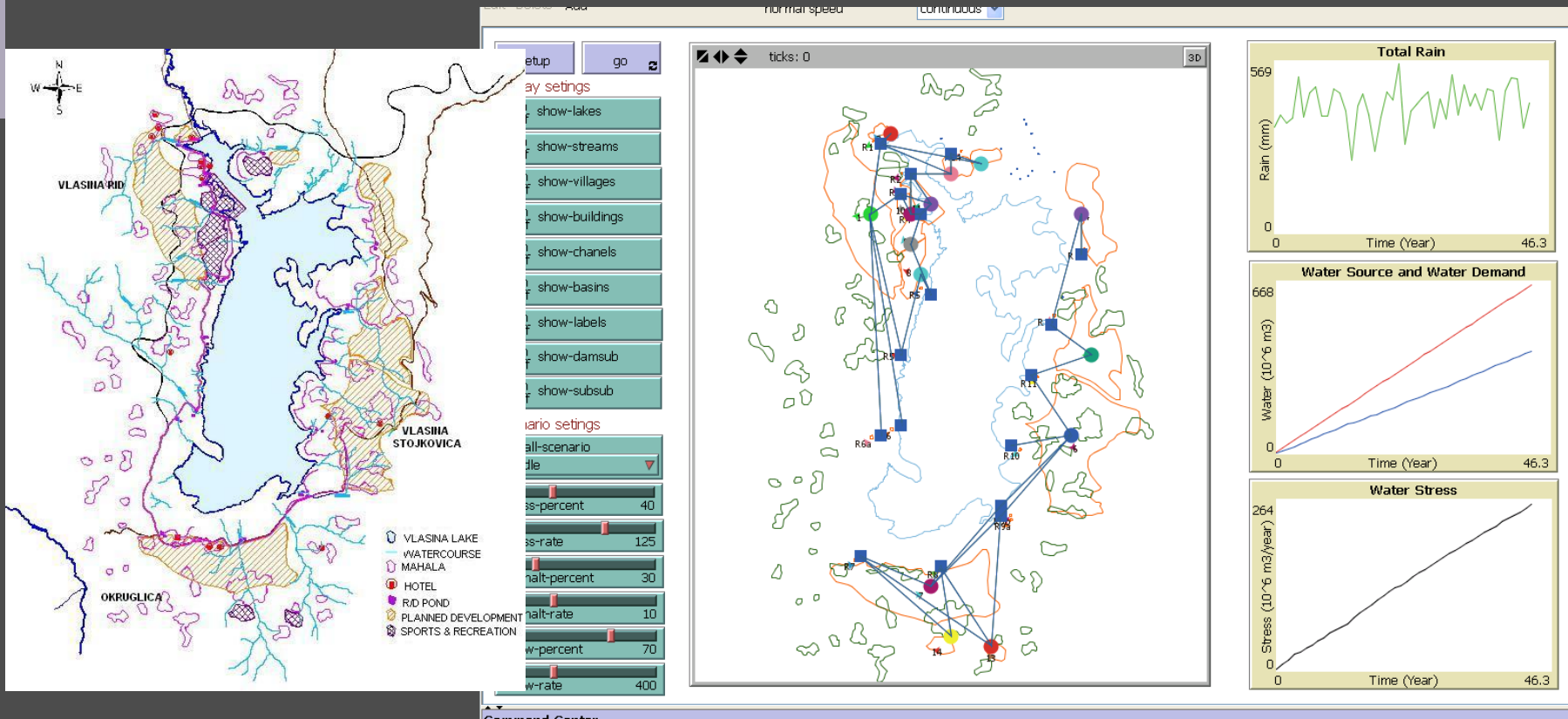
# Methodology-Multi Agent System

- Spatial aspect
- Social aspect
- Integrated multi-agent model
- Software:

NetLogo, version 4.0.5



# Results: Climatic and Socio-economic scenario 1



# Conclusions

- Upgrade initial multi agent model
  - Blue-green corridors criteria
  - LID approach criteria
- Include local planners
- Rise awareness on LID concept





# Thank you for attention

