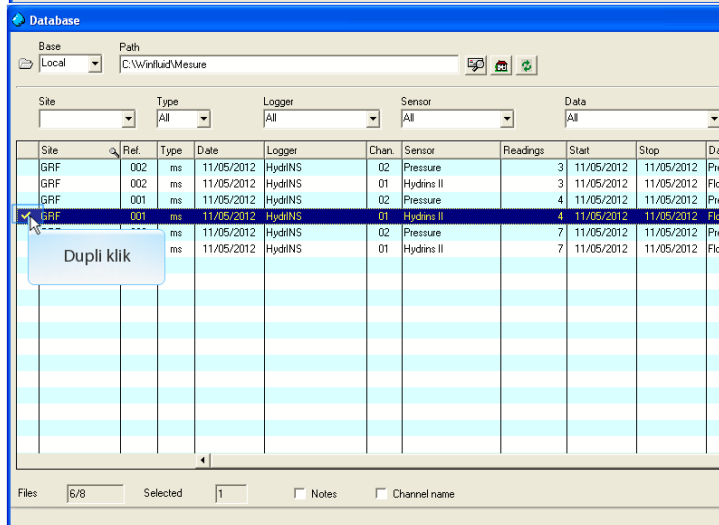
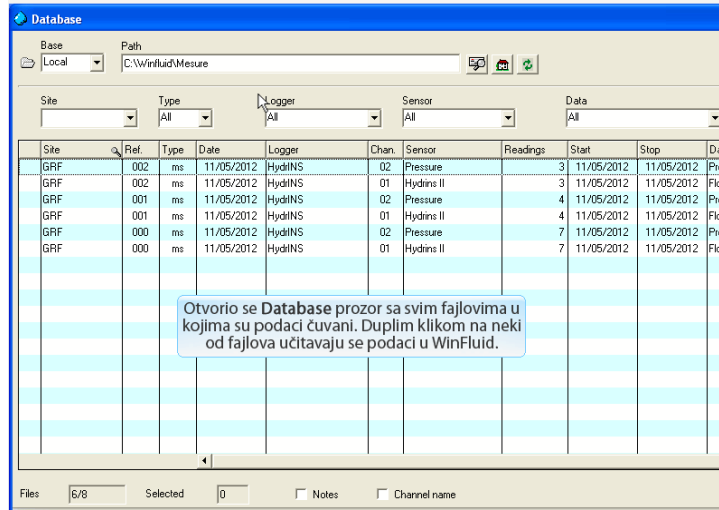
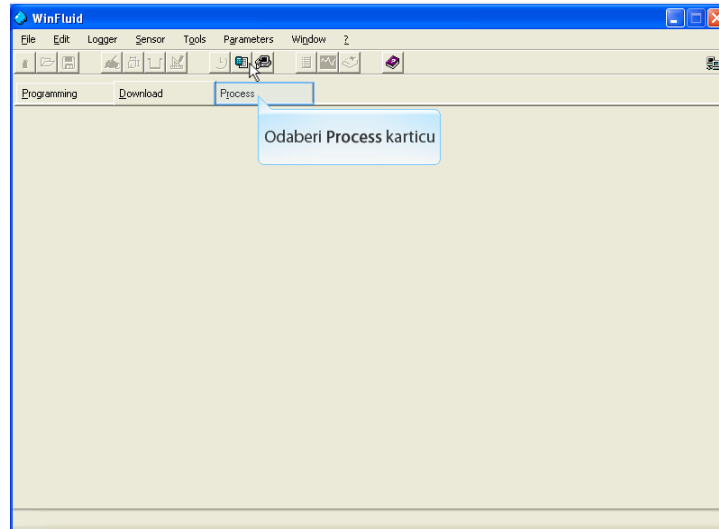


## 5. Obrada preuzetih podataka



**WinFluid**

File Edit Logger Sensor Tools Parameters Window 2

Programming Download Process

Gledanje grafički prikaz podataka

Site: GRF Ref: 001 [ms]

Notes: kurs merenja protoka

Logger: HydrINS Id: 34709

Tel. number: [ ]

Channel: Hydrins II [01]

Sensor: Hydrins II

Start: Fri 11/05/2012 at 13:03 h

Stop: Fri 11/05/2012 at 13:05 h

Window: [ ] h to [ ] h

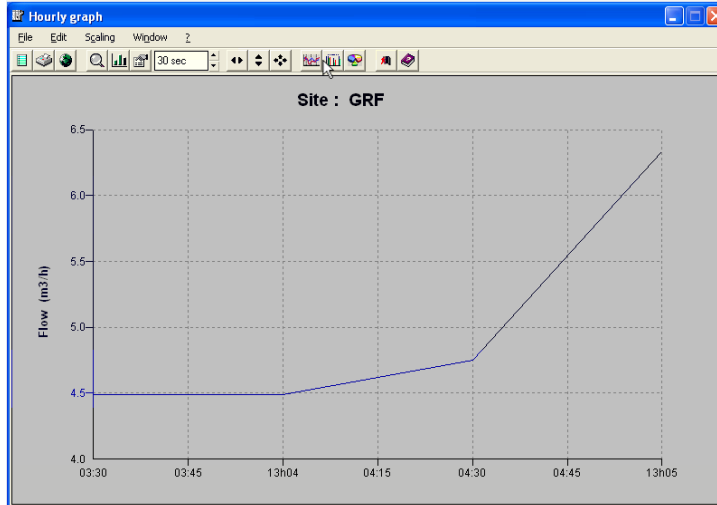
Period: 30 sec

Flow

Minimum	4.49 m3/h
Maximum	6.34 m3/h
Average	5.02 m3/h

Readings: 4

Logging time: 1 min 30 sec



**WinFluid**

File Edit Logger Sensor Tools Parameters Window 2

Programming Download Process

Pregled podataka u obliku tabele

Site: GRF Ref: U01 [ms]

Notes: kurs merenja protoka

Logger: HydrINS Id: 34709

Tel. number: [ ]

Channel: Hydrins II [01]

Sensor: Hydrins II

Start: Fri 11/05/2012 at 13:03 h

Stop: Fri 11/05/2012 at 13:05 h

Window: [ ] h to [ ] h

Period: 30 sec

Flow

Minimum	4.49 m3/h
Maximum	6.34 m3/h
Average	5.02 m3/h

Readings: 4

Logging time: 1 min 30 sec

Hourly table

File Edit Scaling Window ?

Site: GRF.001 [ms] Start: 11/05/2012 at 13:03:30 h Data: Flow (m3/h)

Page: 11/05/2012 at 13:03 h Stop: 11/05/2012 at 13:05:00 h Readings: 4 / 4

Date	Time	Flow	Date	Time	Flow	Date	Time	Flow
11/05/2012	13:03:30	4.49						
	13:04:00	4.49						
	13:04:30	4.75						
	13:05:00	6.34						

Minimum: 4.49 m3/h Fri 11/05/2012 at 13:03:30 h Average: 5.02 m3/h

Maximum: 6.34 m3/h Fri 11/05/2012 at 13:05:00 h

Hourly table

File Edit Scaling Window ?

Odaberi File opciju

Site: GRF.001 [ms] Start: 11/05/2012 at 13:03:30 h Data: Flow (m3/h)

Page: 11/05/2012 at 13:03 h Stop: 11/05/2012 at 13:05:00 h Readings: 4 / 4

Date	Time	Flow	Date	Time	Flow	Date	Time	Flow
11/05/2012	13:03:30	4.49						
	13:04:00	4.49						
	13:04:30	4.75						
	13:05:00	6.34						

Minimum: 4.49 m3/h Fri 11/05/2012 at 13:03:30 h Average: 5.02 m3/h

Maximum: 6.34 m3/h Fri 11/05/2012 at 13:05:00 h

Hourly table

File Edit Scaling Window ?

Print F7

Export F8

Odaberi Export opciju

Site: GRF.001 [ms] Start: 11/05/2012 at 13:03:30 h Data: Flow (m3/h)

Page: 11/05/2012 at 13:03 h Stop: 11/05/2012 at 13:05:00 h Readings: 4 / 4

Date	Time	Flow	Date	Time	Flow	Date	Time	Flow
11/05/2012	13:03:30	4.49						
	13:04:00	4.49						
	13:04:30	4.75						
	13:05:00	6.34						

Minimum: 4.49 m3/h Fri 11/05/2012 at 13:03:30 h Average: 5.02 m3/h

Maximum: 6.34 m3/h Fri 11/05/2012 at 13:05:00 h

Hourly table

File Edit Scaling Window ?

Site GRF.001 [ms] Start 11/05/2012 at 13:03:30 h Data Flow (m3/h)

Page 11/05/2012 at 13:03 h Stop 11/05/2012 at 13:05:00 h Readings 4 / 4

Date	Time	Flow
11/05/2012	13:03:30	
	13:04:00	
	13:04:30	
	13:05:00	

Minimum 4.49 m3/h Fri 11/05/2012 at 13:03:30 h Average 5.02 m3/h

Maximum 6.34 m3/h Fri 11/05/2012 at 13:05:00 h

Exporting

To  
C:\Winfluid\Mesure\GRF.XLS

Options

Format Excel  Ascii

Timescale Date and time  Repeat time

Decimal Comma  Year in 4 digits

Ok Cancel Help

Hourly table

File Edit Scaling Window ?

Site GRF.001 [ms] Start 11/05/2012 at 13:03:30 h Data Flow (m3/h)

Page 11/05/2012 at 13:03 h Stop 11/05/2012 at 13:05:00 h Readings 4 / 4

Date	Time	Flow
11/05/2012	13:03:30	
	13:04:00	
	13:04:30	
	13:05:00	

Minimum 4.49 m3/h Fri 11/05/2012 at 13:03:30 h Average 5.02 m3/h

Maximum 6.34 m3/h Fri 11/05/2012 at 13:05:00 h

Exporting

To  
C:\Winfluid\Mesure\GRF.XLS

Options

Format Excel  Ascii

Timescale Date and time  Repeat time

Decimal Comma  Year in 4 digits

Ok Cancel Help

Upiši ime fajla i putanju

Hourly table

File Edit Scaling Window ?

Site GRF.001 [ms] Start 11/05/2012 at 13:03:30 h Data Flow (m3/h)

Page 11/05/2012 at 13:03 h Stop 11/05/2012 at 13:05:00 h Readings 4 / 4

Date	Time	Flow
11/05/2012	13:03:30	
	13:04:00	
	13:04:30	
	13:05:00	

Minimum 4.49 m3/h Fri 11/05/2012 at 13:03:30 h Average 5.02 m3/h

Maximum 6.34 m3/h Fri 11/05/2012 at 13:05:00 h

Exporting

To  
C:\Winfluid\Mesure\GRF\_1.XLS

Options

Format Excel  Ascii

Timescale Date and time  Repeat time

Decimal Comma  Year in 4 digits

Ok Cancel Help

Klikni na Ok dugme

