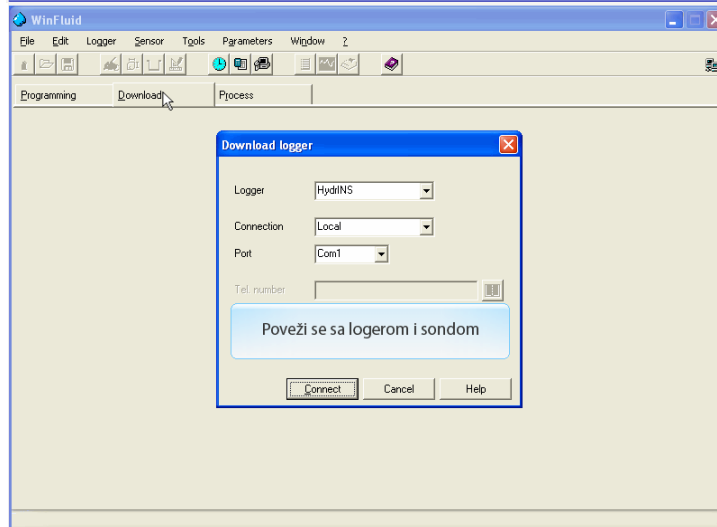
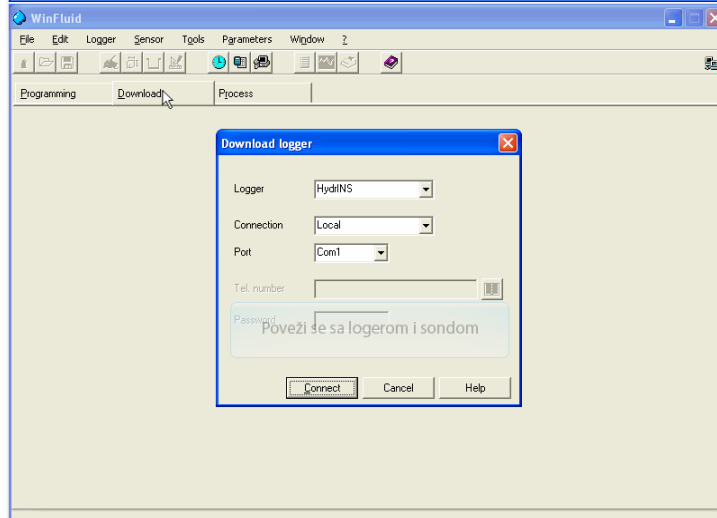
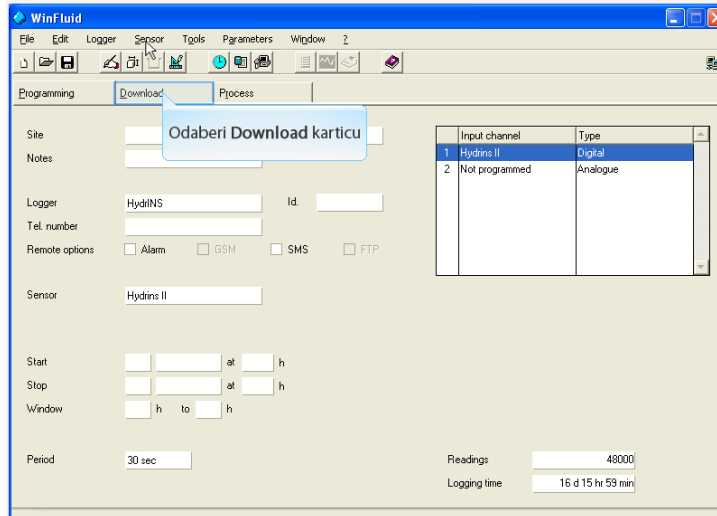
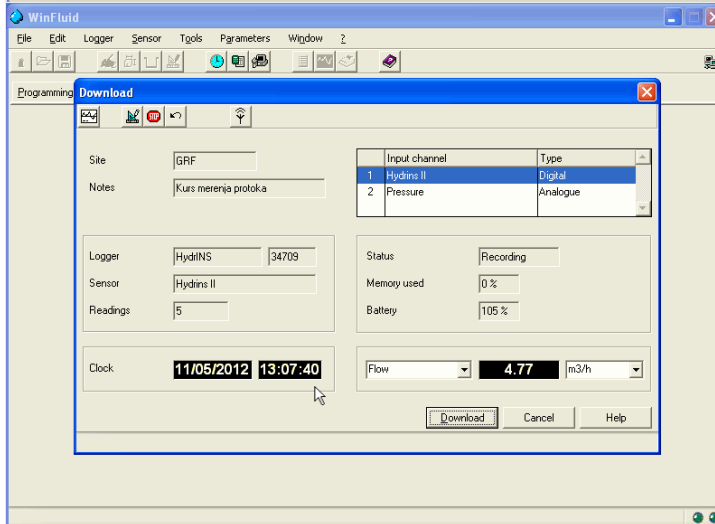
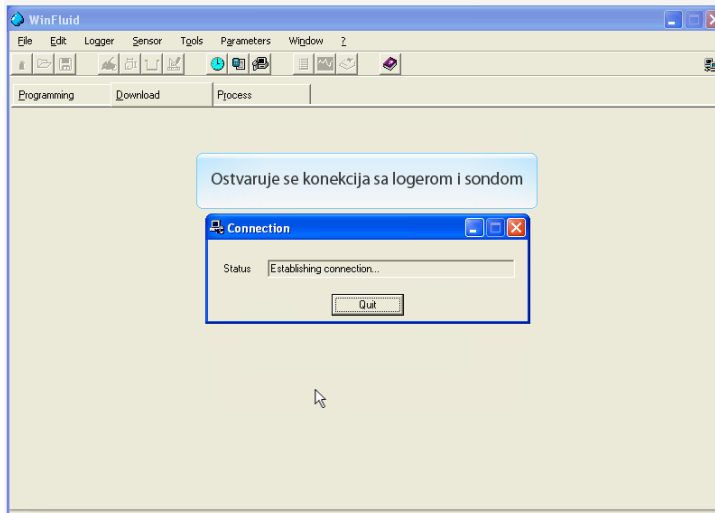
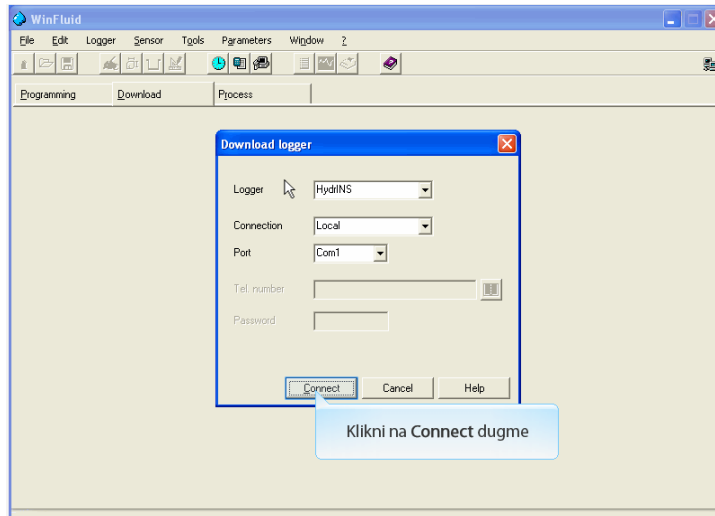


## 4. Preuzimanje podataka sa logera





WinFluid

File Edit Logger Sensor Tools Parameters Window ?

Programming **Download**

Site: GRF  
Notes: Kurs merenja protoka

Input channel	Type
1 Hydrins II	Digital
2 Pressure	Analogue

Logger: HydiINS 34709  
Sensor: Hydrins II  
Readings: 5

Status: Recording  
Memory used: 0 %  
Battery: 105 %

Clock: 11/05/2012 13:07:40  
Flow: 4.77 m3/h

Download Cancel Help

Klikni na Download dugme

WinFluid

File Edit Logger Sensor Tools Parameters Window ?

Programming Download Process

Download

Status: Download in progress...

Ok

WinFluid

File Edit Logger Sensor Tools Parameters Window ?

Programming Download Process

Pregled podataka u vidu tabele

Site: GRF Ref:   
Notes: kurs merenja protoka

Logger: HydiINS Id: 34709  
Tel. number:   
Remote options:  Alarm  GSM  SMS  FTP

Sensor: Hydrins II

Input channel	Type
1 Hydrins II	Digital
2 Pressure	Analogue

Flow:  
Minimum: 3.17 m3/h  
Maximum: 7.13 m3/h  
Average: 5.39 m3/h

Start: Fri 11/05/2012 at 13:05 h  
Stop: Fri 11/05/2012 at 13:07 h  
Window: h to h

Period: 30 sec  
Readings: 5  
Logging time: 2 min

Hourly table

File Edit Scaling Window 2

Site: GRF. Start: 11/05/2012 at 13:05:30 h Data: Flow (m3/h)

Page: 11/05/2012 at 13:05 h Stop: 11/05/2012 at 13:07:30 h Readings: 5 / 5

Date	Time	Flow	Date	Time	Flow	Date	Time	Flow
11/05/2012	13:05:30	5.81						
	13:06:00	7.13						
	13:06:30	6.34						
	13:07:00	4.49						
	13:07:30	3.17						

Minimum: 3.17 m3/h Fri 11/05/2012 at 13:07:30 h Average: 5.39 m3/h

Maximum: 7.13 m3/h Fri 11/05/2012 at 13:06:00 h

Hourly table

File Edit Scaling Window 2

Odaberi meni File

Site: GRF. Start: 11/05/2012 at 13:05:30 h Data: Flow (m3/h)

Page: 11/05/2012 at 13:05 h Stop: 11/05/2012 at 13:07:30 h Readings: 5 / 5

Date	Time	Flow	Date	Time	Flow	Date	Time	Flow
11/05/2012	13:05:30	5.81						
	13:06:00	7.13						
	13:06:30	6.34						
	13:07:00	4.49						
	13:07:30	3.17						

Minimum: 3.17 m3/h Fri 11/05/2012 at 13:07:30 h Average: 5.39 m3/h

Maximum: 7.13 m3/h Fri 11/05/2012 at 13:06:00 h

Hourly table

File Edit Scaling Window 2

Print F7

Export F8

Odaberi Export opciju

Site: GRF. Start: 11/05/2012 at 13:05:30 h Data: Flow (m3/h)

Page: 11/05/2012 at 13:05 h Stop: 11/05/2012 at 13:07:30 h Readings: 5 / 5

Date	Time	Flow	Date	Time	Flow	Date	Time	Flow
11/05/2012	13:05:30	5.81						
	13:06:00	7.13						
	13:06:30	6.34						
	13:07:00	4.49						
	13:07:30	3.17						

Minimum: 3.17 m3/h Fri 11/05/2012 at 13:07:30 h Average: 5.39 m3/h

Maximum: 7.13 m3/h Fri 11/05/2012 at 13:06:00 h

Hourly table

File Edit Scaling Window ?

Site GRF Start 11/05/2012 at 13:05:30 h Data Flow (m3/h)

Page 11/05/2012 at 13:05 h Stop 11/05/2012 at 13:07:30 h Readings 5 / 5

Date	Time	Flow
11/05/2012	13:05:30	
	13:06:00	
	13:06:30	
	13:07:00	
	13:07:30	

Minimum 3.17 m3/h Fri 11/05/2012 at 13:07:30 h Average 5.39 m3/h

Maximum 7.13 m3/h Fri 11/05/2012 at 13:06:00 h

Exporting

To C:\Winfluid\Mesure\GRF.XLS

Options:

Format Excel  Ascii

Timescale Date and time  Repeat time

Decimal Comma  Year in 4 digits

Ok Cancel Help

Hourly table

File Edit Scaling Window ?

Site GRF Start 11/05/2012 at 13:05:30 h Data Flow (m3/h)

Page 11/05/2012 at 13:05 h Stop 11/05/2012 at 13:07:30 h Readings 5 / 5

Date	Time	Flow
11/05/2012	13:05:30	
	13:06:00	
	13:06:30	
	13:07:00	
	13:07:30	

Minimum 3.17 m3/h Fri 11/05/2012 at 13:07:30 h Average 5.39 m3/h

Maximum 7.13 m3/h Fri 11/05/2012 at 13:06:00 h

Exporting

To C:\Winfluid\Mesure\GRF.XLS

Options:

Format Excel  Ascii

Timescale Date and time  Repeat time

Decimal Comma  Year in 4 digits

Ok Cancel Help

Odaberi format u koji želiš da izvezes podatke

Hourly table

File Edit Scaling Window ?

Site GRF Start 11/05/2012 at 13:05:30 h Data Flow (m3/h)

Page 11/05/2012 at 13:05 h Stop 11/05/2012 at 13:07:30 h Readings 5 / 5

Date	Time	Flow
11/05/2012	13:05:30	
	13:06:00	
	13:06:30	
	13:07:00	
	13:07:30	

Minimum 3.17 m3/h Fri 11/05/2012 at 13:07:30 h Average 5.39 m3/h

Maximum 7.13 m3/h Fri 11/05/2012 at 13:06:00 h

Exporting

To C:\Winfluid\Mesure\GRF.XLS

Options:

Format Excel  Ascii

Timescale Geremi Ladre Lemne (Archives) Safage Sandre Thale Topkapi Value Vrage

Decimal Comma  Year in 4 digits

Ok Cancel Help

Hourly table

File Edit Scaling Window ?

Site GRF. Start 11/05/2012 at 13:05:30 h Data Flow (m3/h)

Page 11/05/2012 at 13:05 h Stop 11/05/2012 at 13:07:30 h Readings 5 / 5

Date	Time	Flow
11/05/2012	13:05:30	
	13:06:00	
	13:06:30	
	13:07:00	
	13:07:30	

Exporting

To: C:\winfluid\Mesure\GRF.XLS

Options:

Format: Excel

Timescale: Date and time

Decimal: Comma

Ascii

Repeat time

Format vremenske skale

Ok Cancel Help

Minimum 3.17 m3/h Fri 11/05/2012 at 13:07:30 h Average 5.39 m3/h

Maximum 7.13 m3/h Fri 11/05/2012 at 13:06:00 h

Hourly table

File Edit Scaling Window ?

Site GRF. Start 11/05/2012 at 13:05:30 h Data Flow (m3/h)

Page 11/05/2012 at 13:05 h Stop 11/05/2012 at 13:07:30 h Readings 5 / 5

Date	Time	Flow
11/05/2012	13:05:30	
	13:06:00	
	13:06:30	
	13:07:00	
	13:07:30	

Exporting

To: C:\winfluid\Mesure\GRF.XLS

Options:

Format: Excel

Timescale: Date and time

Decimal: Time

Ascii

Repeat time

Year in 4 digits

Format decimalnih vrednosti: zarez ili tacka

Ok Cancel Help

Minimum 3.17 m3/h Fri 11/05/2012 at 13:07:30 h Average 5.39 m3/h

Maximum 7.13 m3/h Fri 11/05/2012 at 13:06:00 h

Hourly table

File Edit Scaling Window ?

Site GRF. Start 11/05/2012 at 13:05:30 h Data Flow (m3/h)

Page 11/05/2012 at 13:05 h Stop 11/05/2012 at 13:07:30 h Readings 5 / 5

Date	Time	Flow
11/05/2012	13:05:30	
	13:06:00	
	13:06:30	
	13:07:00	
	13:07:30	

Exporting

To: C:\winfluid\Mesure\GRF.XLS

Options:

Format: Excel

Timescale: Date and time

Decimal: Comma

Ascii

Repeat time

Year in 4 digits

Format decimalnih vrednosti: zarez ili tacka

Ok Cancel Help

Minimum 3.17 m3/h Fri 11/05/2012 at 13:07:30 h Average 5.39 m3/h

Maximum 7.13 m3/h Fri 11/05/2012 at 13:06:00 h

