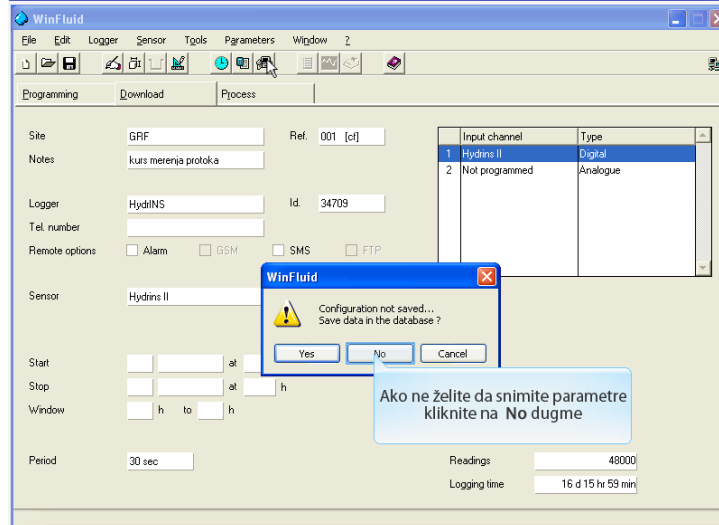
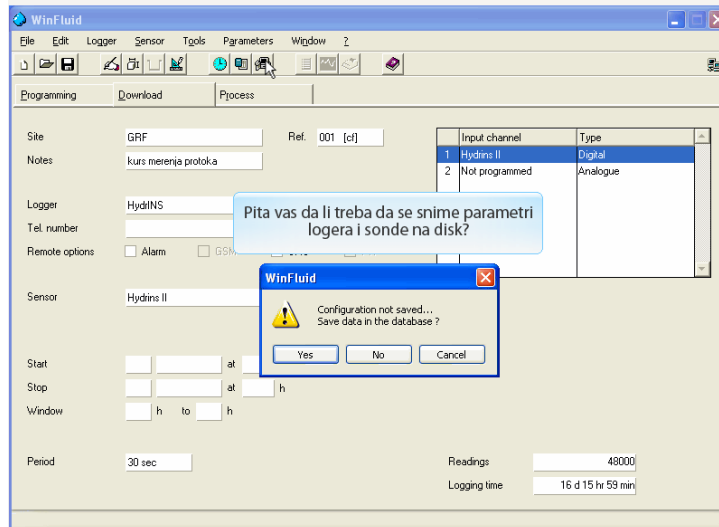
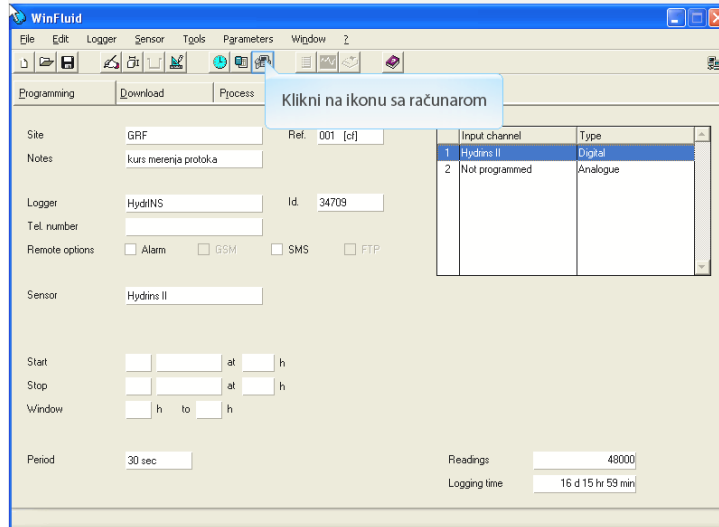
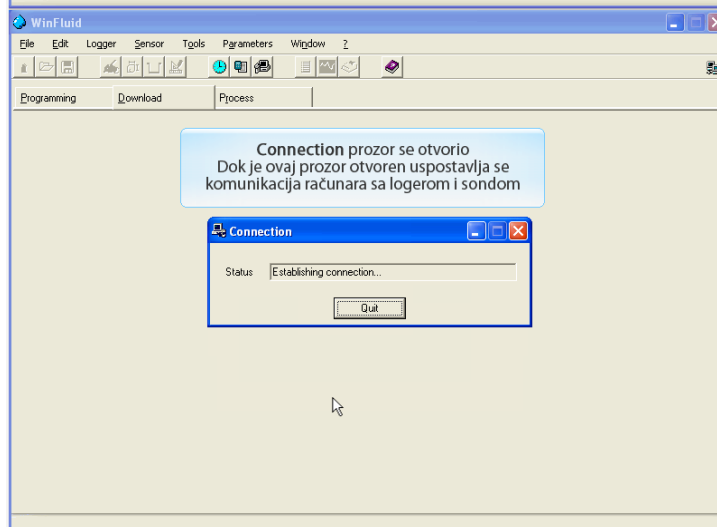
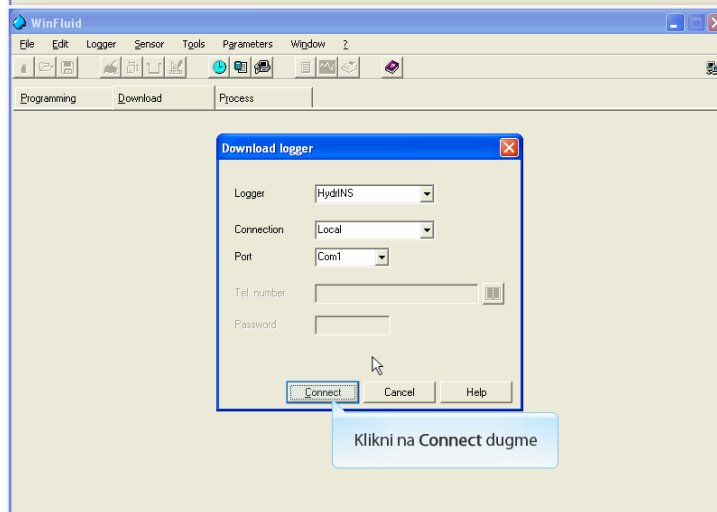
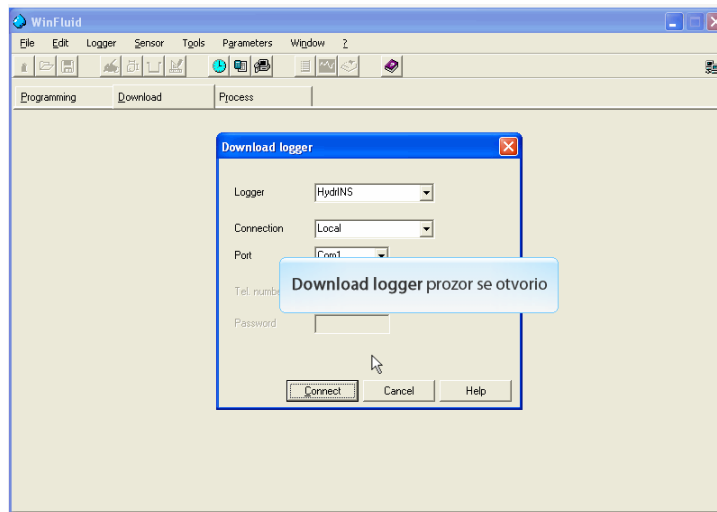
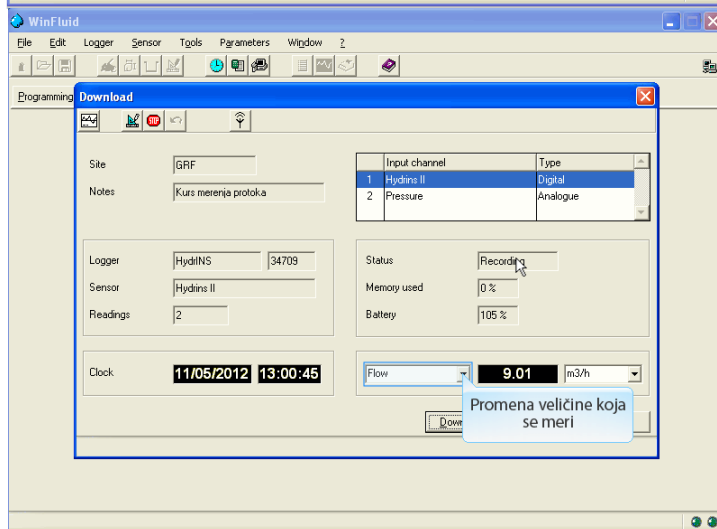
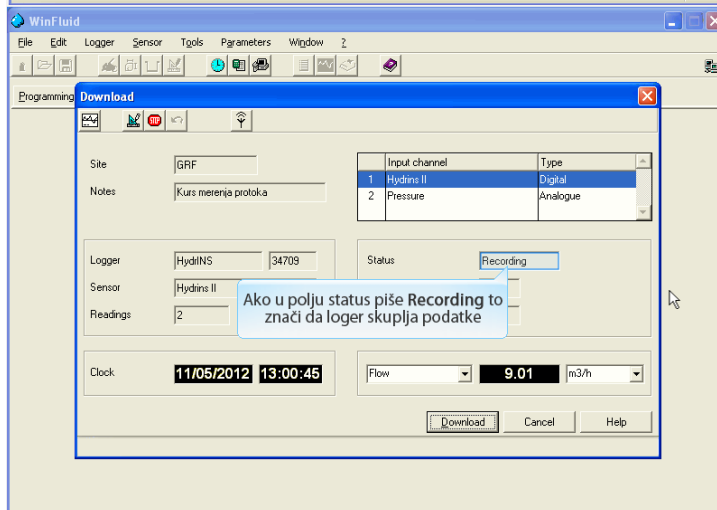
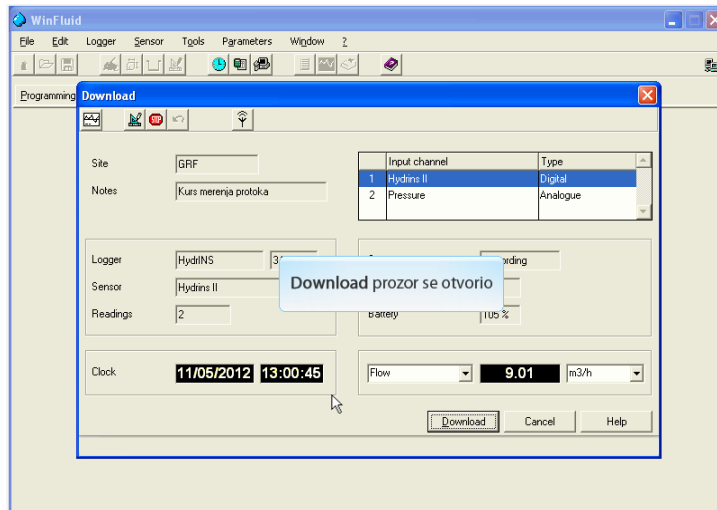
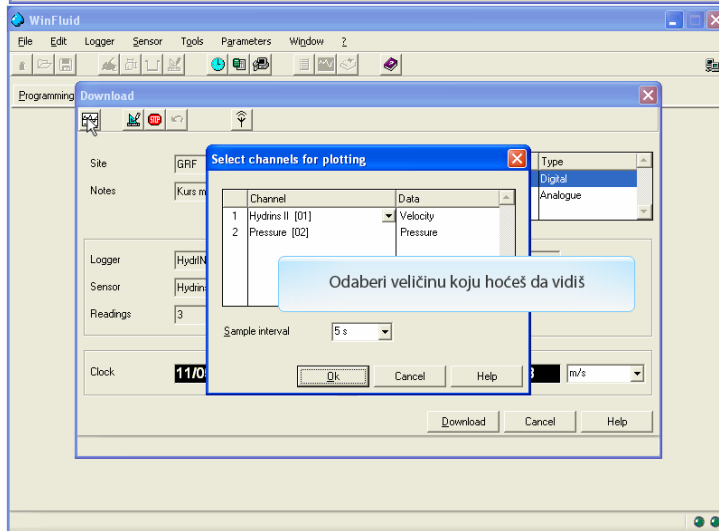
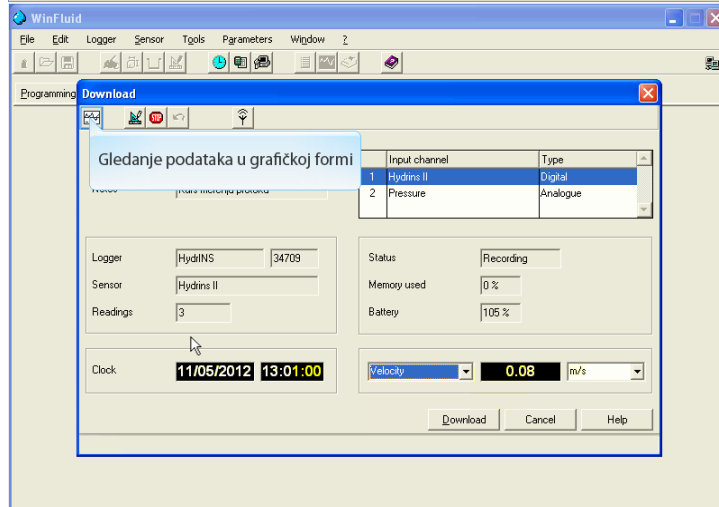
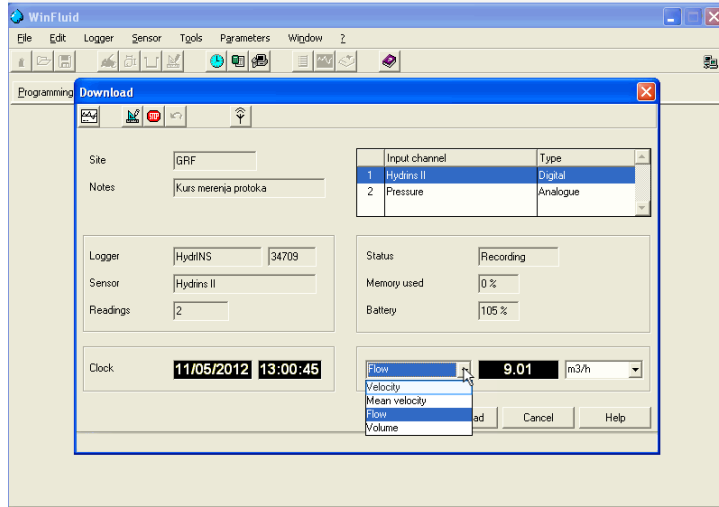


3. Startovanje logera i provera da li skuplja podatke









WinFluid

File Edit Logger Sensor Tools Parameters Window 2

Programming Download

Site: GRF

Notes: Kurs m

Logger: HydIN

Sensor: HydIN

Readings: 3

Clock: 11/0

Sample interval: 5 s

Type: Digital

Analogue

Velocity: m/s

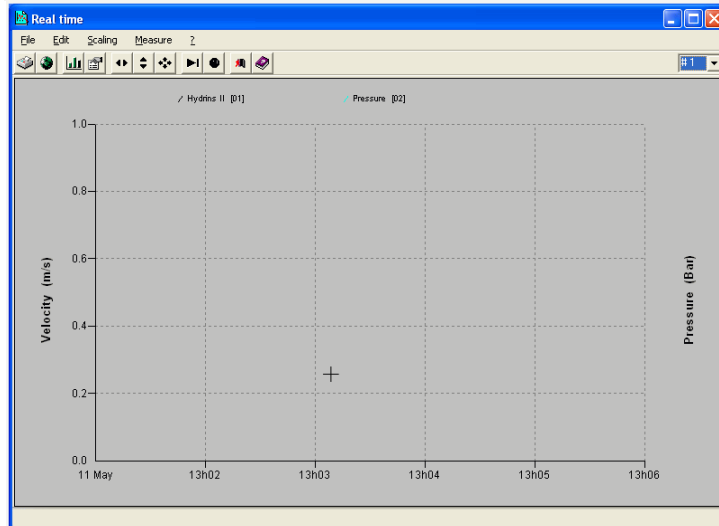
Pressure: Bar

Select channels for plotting

Channel	Data
1 Hydins II [01]	Velocity
2 Pressure [02]	Pressure

Ok Cancel Help

Klikni na Ok dugme



WinFluid

File Edit Logger Sensor Tools Parameters Window 2

Programming Download

Site: GRF

Notes: Kurs merenja protoka

Logger: HydINS 34709

Sensor: Hydins II

Readings: 4

Clock: 11/05/2012 13:01:35

Input channel

Input channel	Type
1 Hydins II	Digital
2 Pressure	Analogue

Status: Recording

Memory used: 0 %

Battery: 105 %

Velocity: 0.07 m/s

Download Cancel Help

Odaberi Cancel dugme

