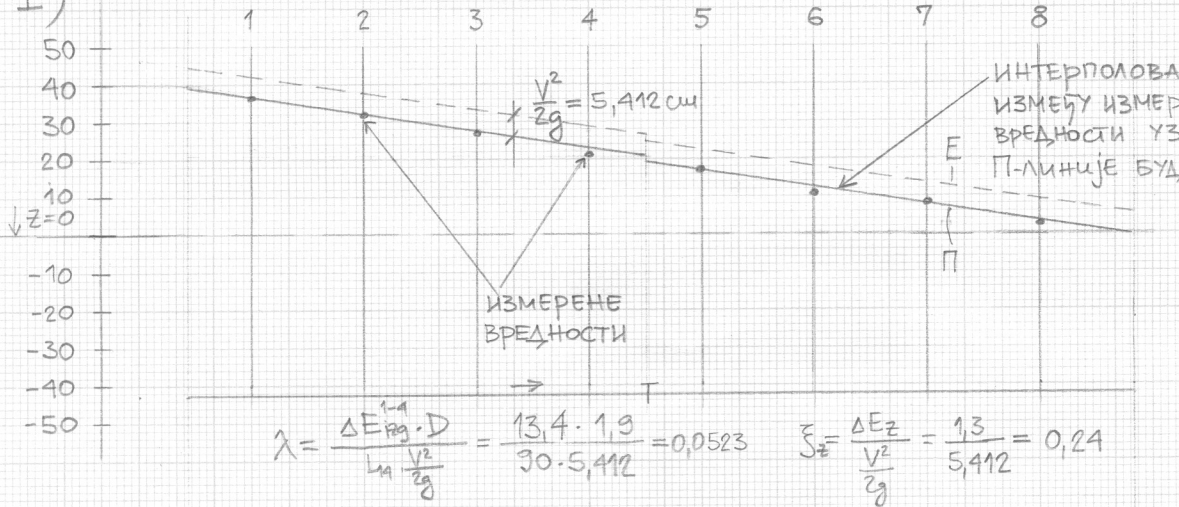
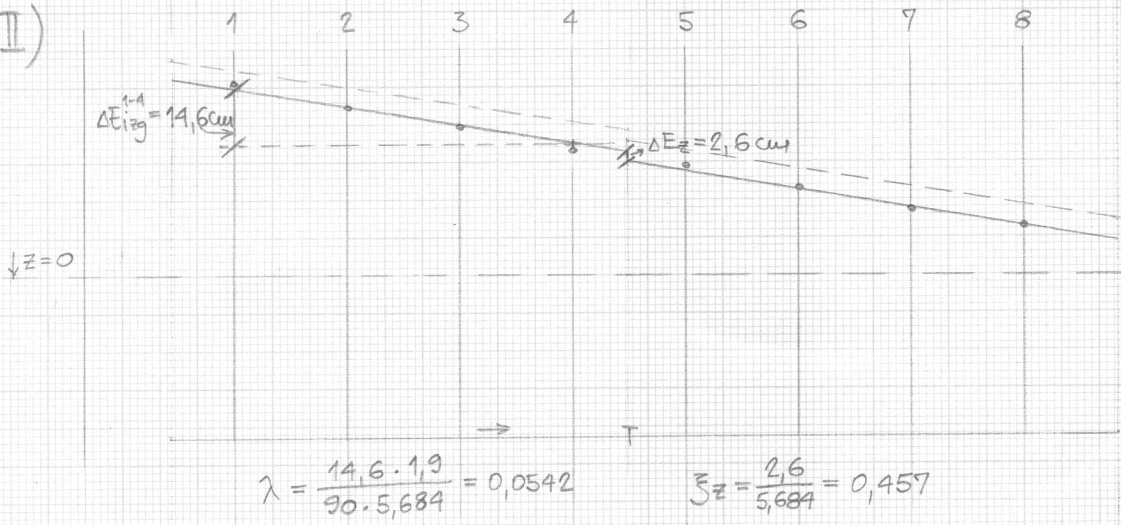


- ЗАТВАРАЧ ОТВОРИ -
 ХОРИЗОНТАЛНА ЦЕВ

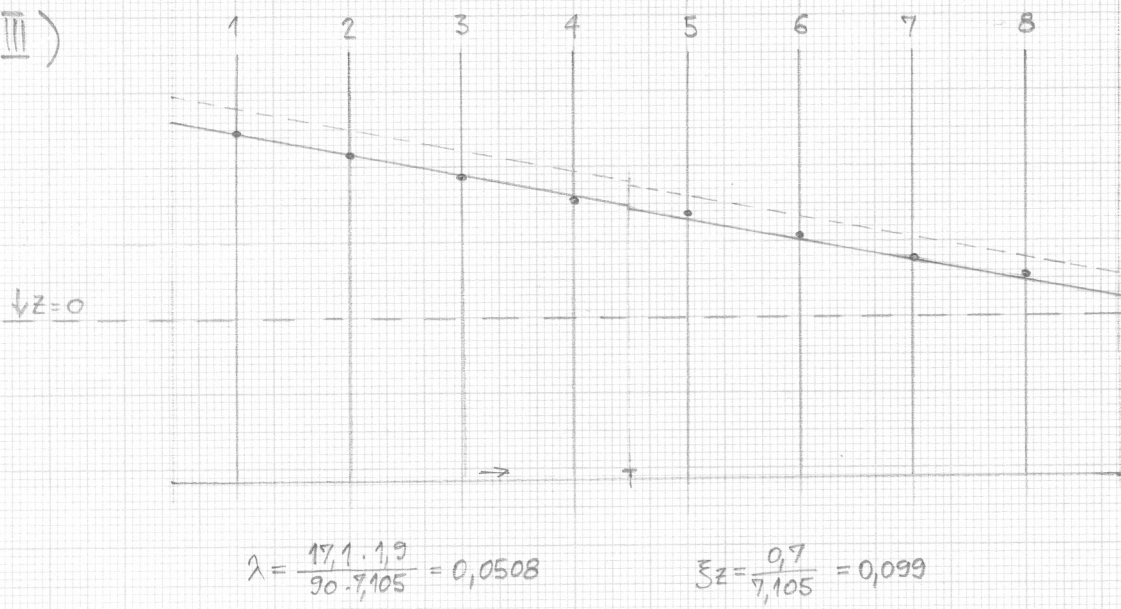
I)



II)

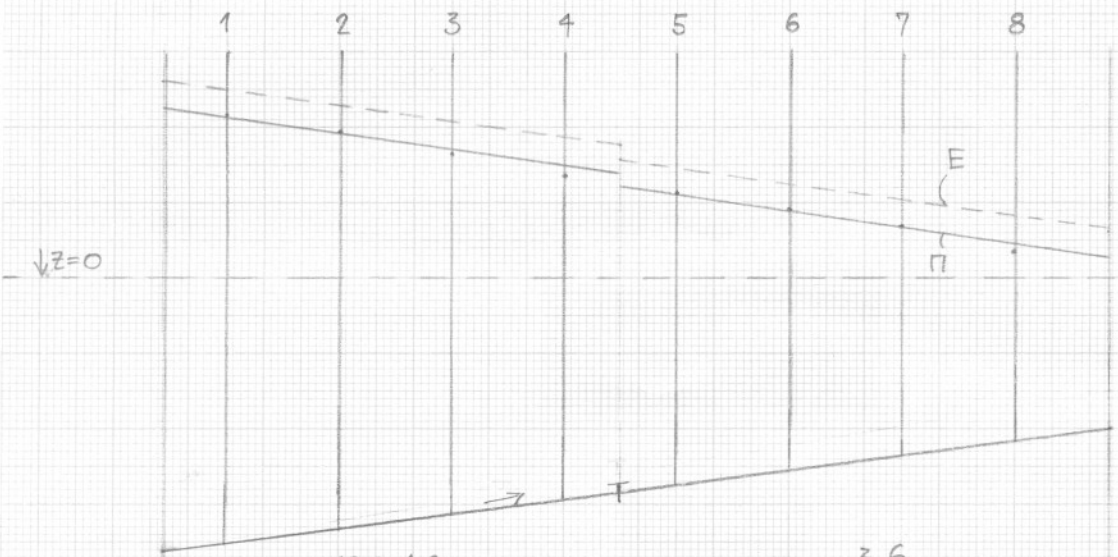


III)



-ЗАТВАРАЧ ОТВОРЕН-

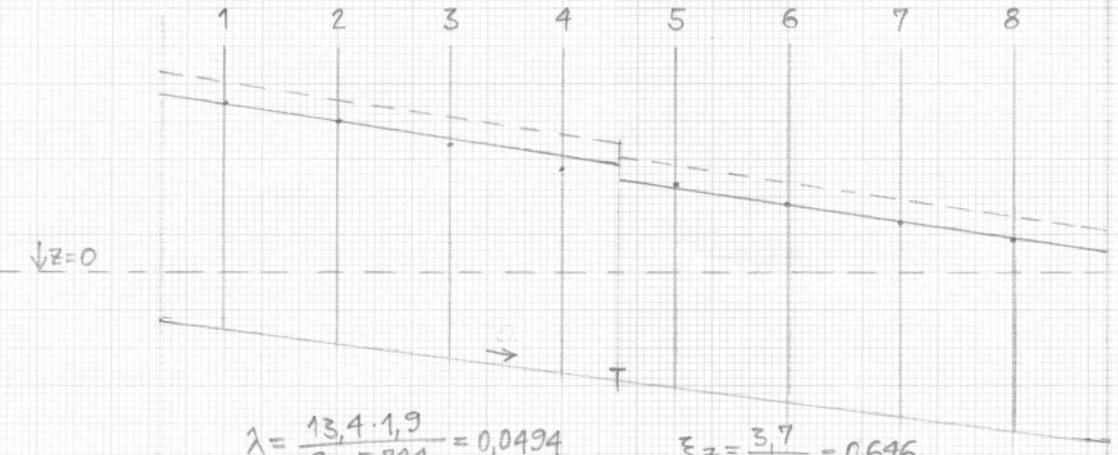
ДОНЬИ ПОЛОЖАЈ ЦЕВИ



$$\lambda = \frac{12,6 \cdot 1,9}{90 \cdot 7,045} = 0,0378$$

$$\xi_z = \frac{3,6}{7,045} = 0,511$$

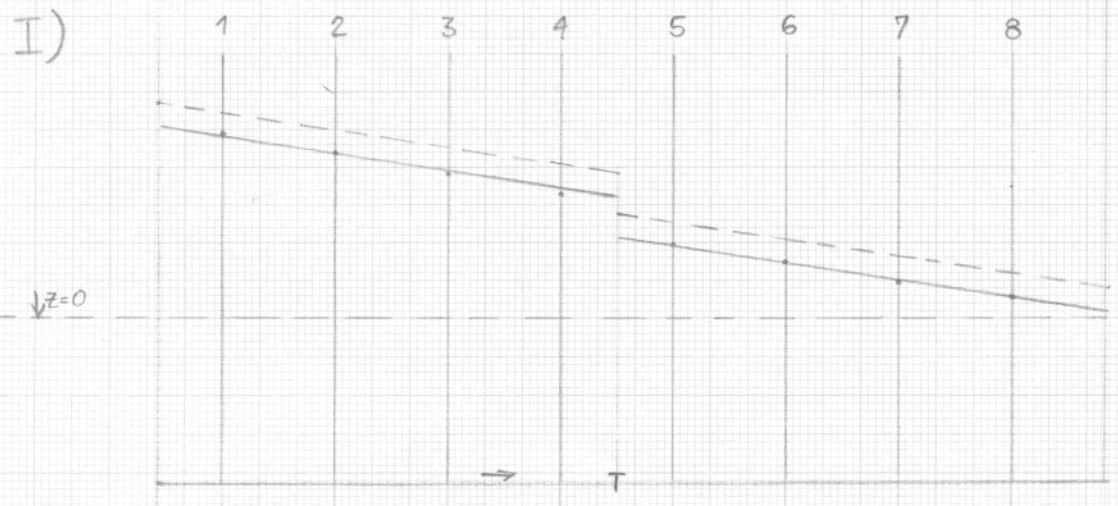
ГОРЊИ ПОЛОЖАЈ ЦЕВИ



$$\lambda = \frac{13,4 \cdot 1,9}{90 \cdot 5,724} = 0,0494$$

$$\xi_z = \frac{3,7}{5,724} = 0,646$$

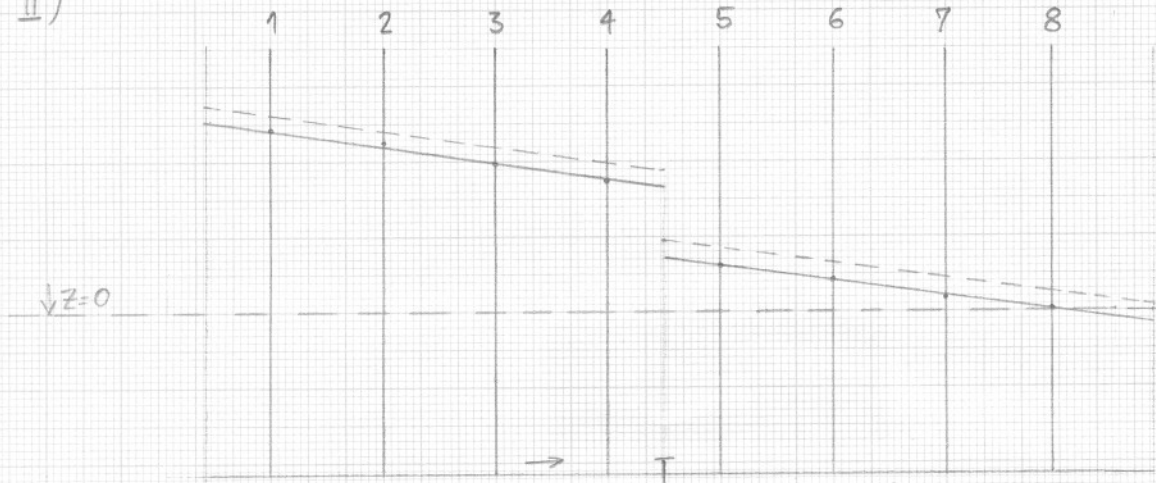
-ЗАТВАРАЧ ДЕЛИМИЧНО ОТВОРЕН -
ХОРИЗОНТАЛНА ЦЕВ



$$\lambda = \frac{13,8 \cdot 1,9}{90 \cdot 6,094} = 0,0478$$

$$\xi_z = \frac{10,6}{6,094} = 1,739$$

I)



$$\lambda = \frac{12,8 \cdot 1,9}{90 \cdot 4,360} = 0,0620$$

$$\xi = \frac{19,2}{4,360} = 4,404$$